

How can I get maps?

A series of standard GIS maps are available to tribal members, and for a small fee, non-tribal members. This includes roads, zoning, fishing areas and others. High resolution aerial photographs are available from March 2004 for all areas of the Reservation. Additionally, an addressing atlas is available for \$40 and contains the location of every addressed structure on the Reservation.

Custom maps can be designed and printed. Rates for this vary depending on the degree of difficulty and available existing data.

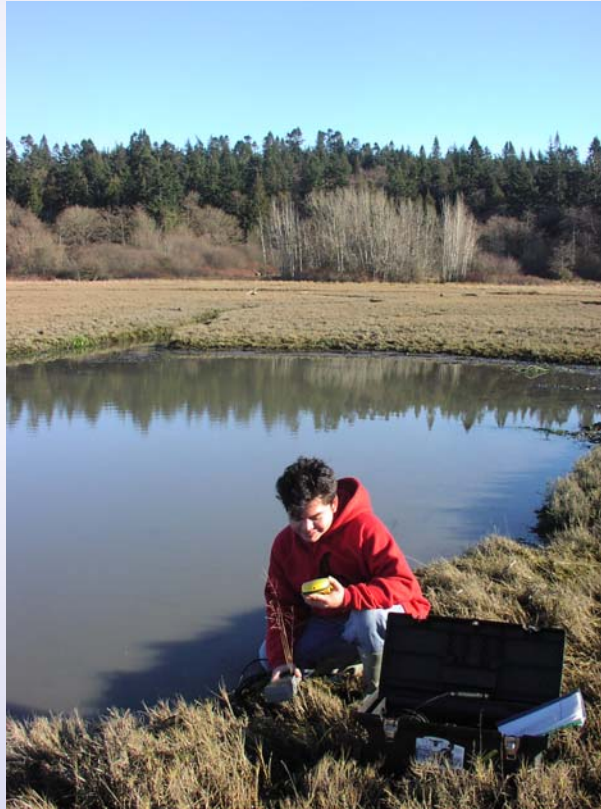
Stop by the GIS office in the Natural Resources building or contact Ann Stark at 360-384-2372 or anns@lummi-nsn.gov for more information or to purchase a map.



GIS Division
2616 Kwina Road
Bellingham, WA 98226
360-384-2372
360-384-4737 (fax)

anns@lummi-nsn.gov

"Knowing where things are, and why, is essential to rational decision making."



Water resources technician Mann Lewis collects data with a GPS device for use in the tribal GIS system.

LUMMI
NATION



GIS Division
Natural Resources
Department



"The uses of GIS are limited only by your imagination."

What is GIS?

GIS is an acronym for Geographic Information System.

But what is it really? GIS is a combination of data and software used to analyze geographic information. It can be used to make maps, reports, or charts and to evaluate relationships between places and information. The Lummi Nation's GIS is made up of hundreds of data layers and ArcGIS® software. These data layers are combined in different ways to analyze and display the information on a map.

How does GIS contribute to the Lummi Nation?

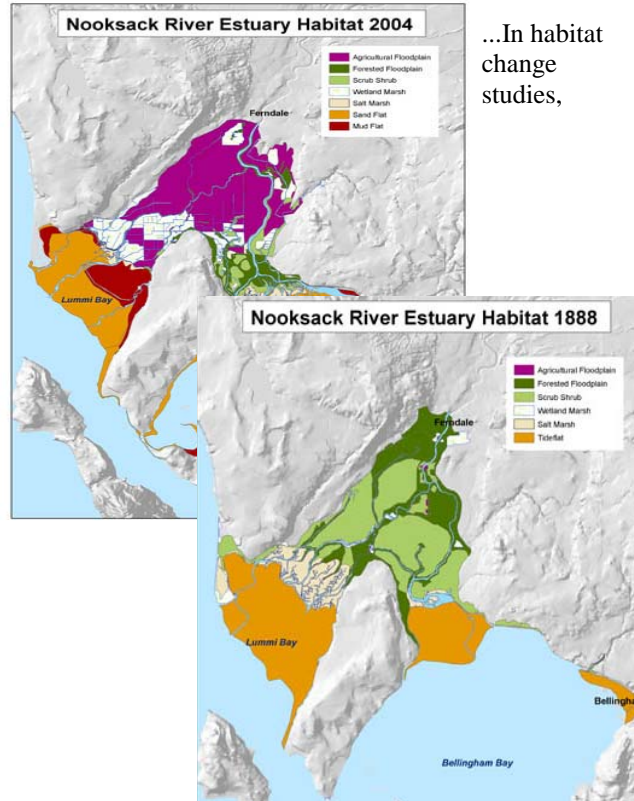
Many LIBC staff use GIS to help do their job. GIS is flexible and can be used in many applications. Natural Resources scientists use it to track samples, habitat, or animal and fish locations. Planning and Realty staff use GIS to track parcel information and for land use and transportation planning. Cultural Resources staff use it to track permit applications and the locations of cultural resources. Statistics staff use it to track census information. Law and Order use GIS to make maps for their daily work. GIS is also used to make maps for future work so that designers and construction managers can talk about what work is planned and how it affects current and future conditions.

In short, GIS is used to more effectively and efficiently perform their jobs and to help them organize large amounts of information.

How can I find out more about GIS?

The GIS Division is located in the Natural Resources building at 2616 Kwina Road. There are also many examples of how GIS is used throughout the world on the internet.

How is GIS being used...?

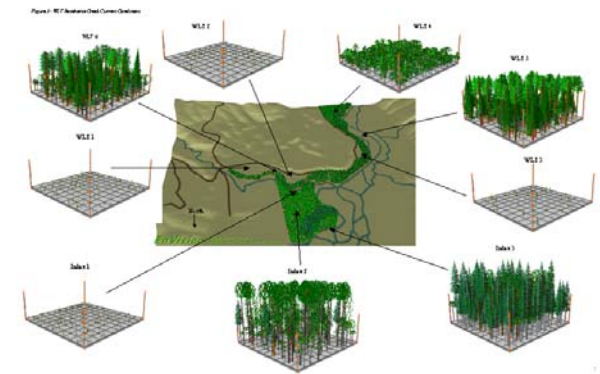


...In habitat change studies,

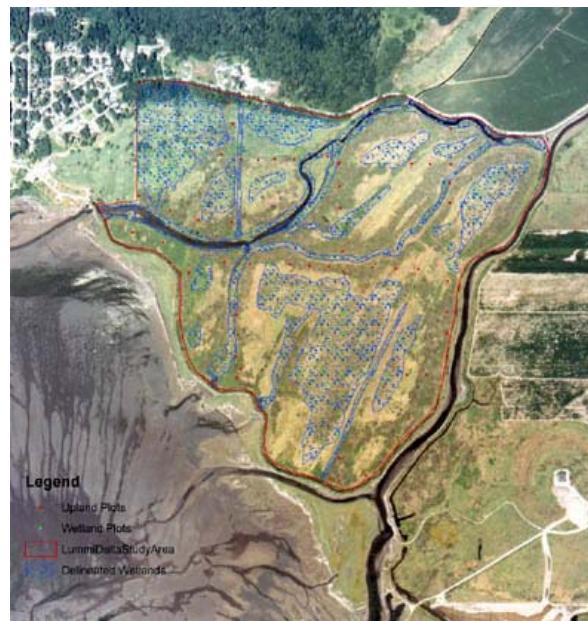
...in project reports,



...in forestry studies,



...in wetland inventory and classification,



... and in emergency planning.

