

Lummi Nation Climate Change Plan 2016-26

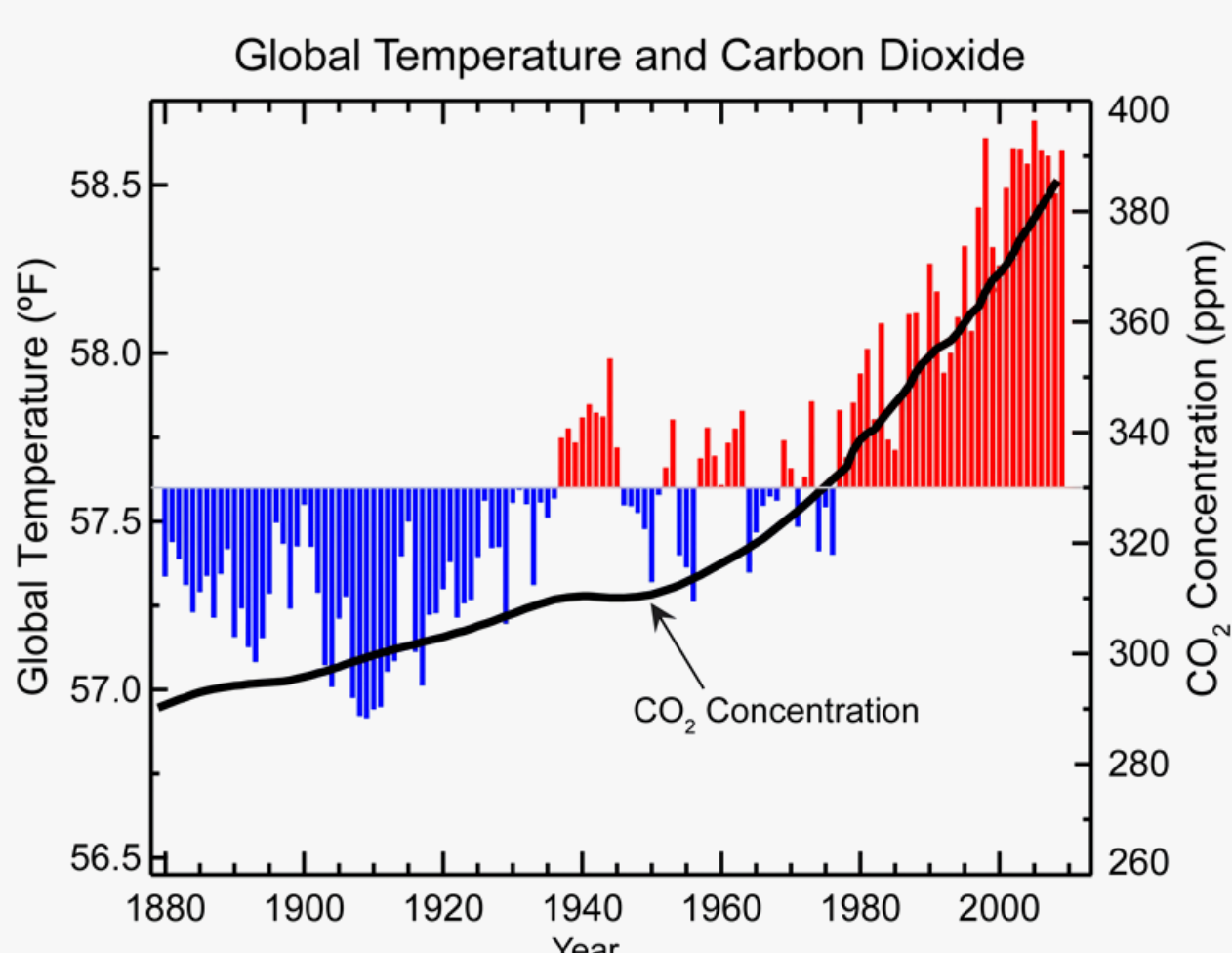
[VIEW THE REPORT](#)

Climate Change

Climate change is caused by the buildup of greenhouse gases (GHGs) like carbon dioxide and methane in the atmosphere, due to human activities such as burning fossil fuels.

The impacts of climate change, including heatwaves, droughts, floods, and wildfires, are already here and are projected to worsen over time.

Climate change is altering air and ocean temperatures, raising sea levels, changing rainfall and snowfall patterns, and increasing the frequency and severity of extreme weather events.



The Lummi Reservation is already experiencing climate impacts, and the Lummi Indian Business Council (LIBC) passed a resolution in 2014 recognizing this and enabling further action.

Lummi Climate Impacts



Flooding

Climate Change makes extreme weather more likely, so the Nooksack River floods more frequently and with greater intensity than in the past, affecting homes and infrastructure in the floodplain.



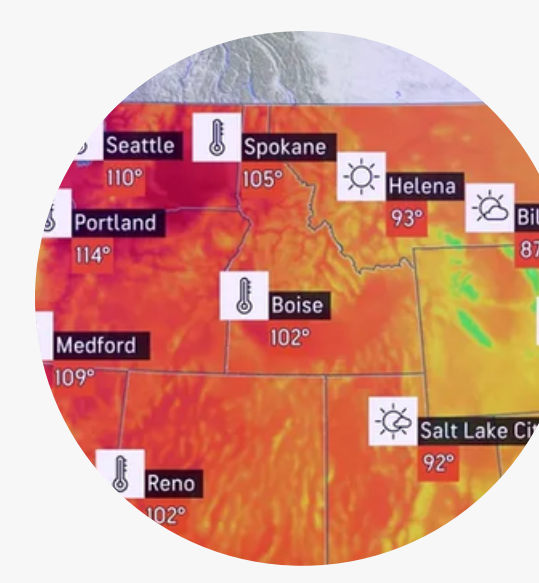
Sea Level Rise

Rising seas threaten coastal wetlands, which are critical to fish, shellfish, birds, and other species that rely on estuarine habitats. Sensitive shorelines around Gooseberry and Sandy Point are most vulnerable.



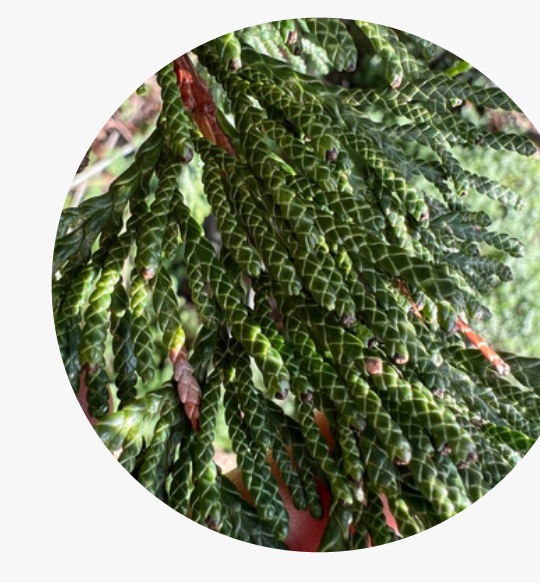
Marine Life

Lummi and Portage Bays now experience more frequent closures during spring and summer due to harmful algal blooms (HABs) and high toxin levels that make shellfish unsafe to eat.



Human Health

Climate change is expected to bring increased health challenges, including heat-related illnesses due to warming temperatures, longer and intense allergy seasons, and mental health impacts.



Traditional Species

Key species like salmon and longfin smelt (hooligans) are vulnerable to rising temperatures and changing ocean conditions. Native trees such as western redcedar are also at risk, with habitat ranges predicted to shift to higher elevations outside Reservation boundaries.



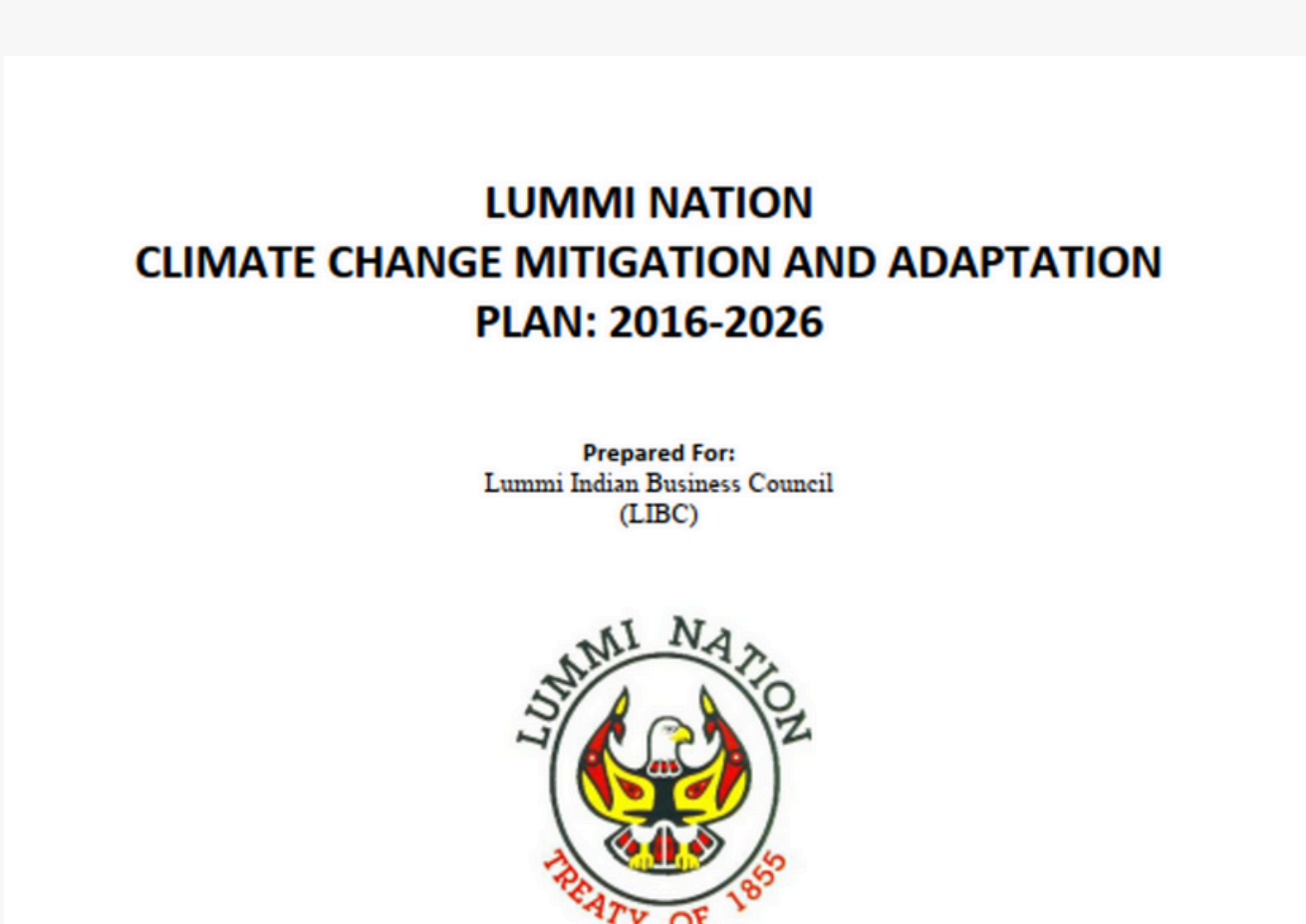
Harmful Algal Blooms (HABs)

HABs occur due to warmer water temperatures, increasing the amount of harmful algae and bacteria. Usually, it occurs during late summer to early fall. The algae produce toxins that make shellfish unsafe for people to eat. HABs will become more frequent and longer-lasting.

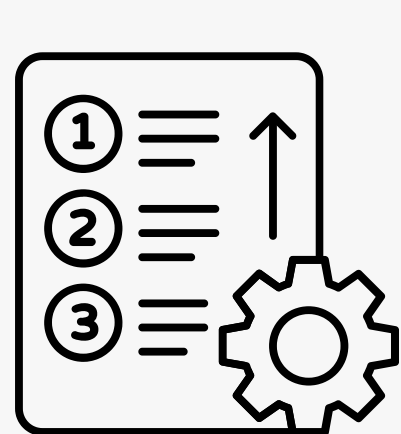
Climate Change Plan Created

CLIMATE CHANGE MITIGATION & ADAPTATION PLAN 2016-2026

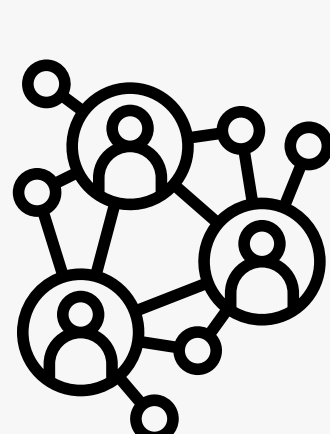
In 2016, Lummi Natural Resources (LNR) developed the Climate Change Mitigation and Adaptation Plan 2016-26 (CCMAP) to make the Lummi Nation more resilient to climate change. This plan focuses on both adapting to the changes already happening and reducing future risks.



Climate Change Committee Created



Priority Mitigation Efforts



Outreach & Education



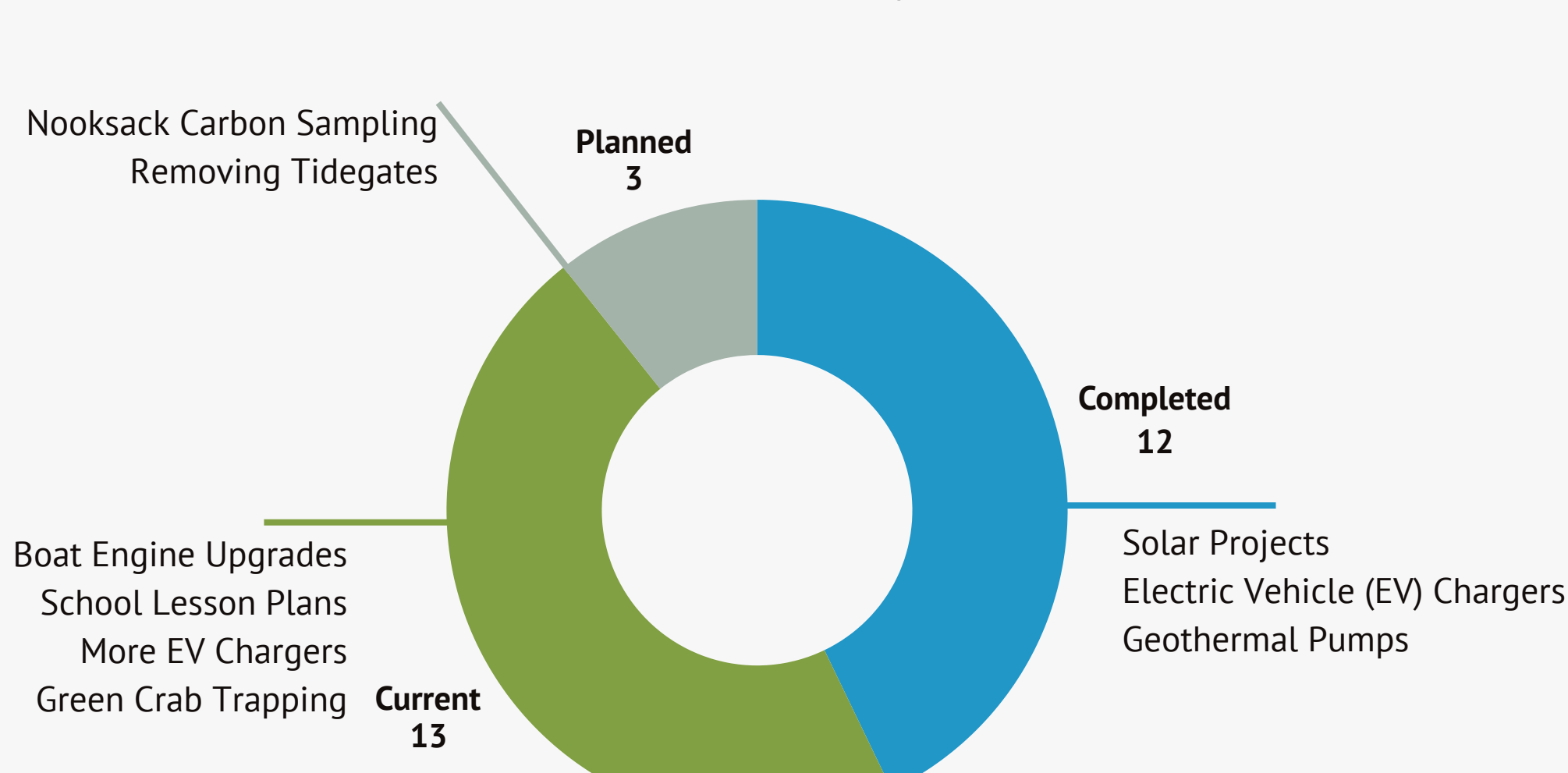
Ongoing Strategy Updates

Lummi Natural Resources Climate Projects

[VIEW PROJECTS](#)

Projects Status

Mitigation and adaption projects from LNR and other LIBC departments



Project Highlights



Clean Energy

Solar panels have been installed across the Reservation, with more planned to further reduce our carbon emissions.



Electric Vehicles

LIBC is slowly transitioning its vehicle fleet to electric or hybrid. There are also more EV charging stations across the Reservation.



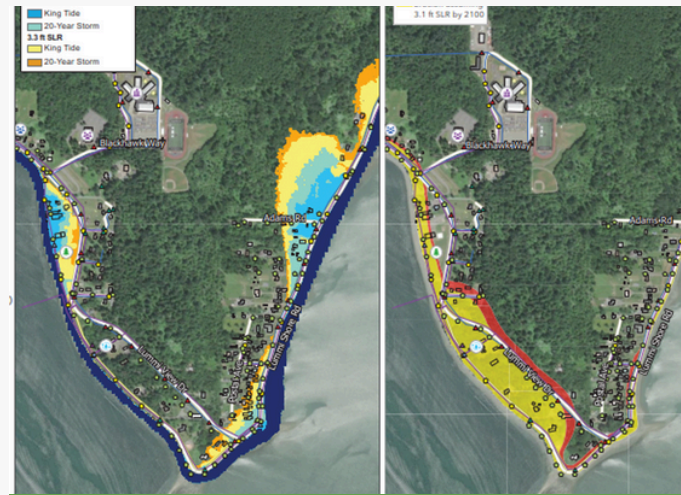
Walkability

More sidewalks have been built across the Reservation to encourage walking more, reducing the reliance on cars, in addition to safety.



Flood Protection

Plans are underway to build new levees along the Nooksack River, and build a new bridge on Slater Road, to prevent flooding in the area.



Sea Level Rise Planning

Through new projections of sea level rise across the Reservation, departments can better plan projects to take the projections into account.



Collaboration

LNR has convened the first meeting of the Interdepartmental Climate Change Team and is working to build relationships across departments, within the community, and with regional partners

Climate Change Plan Update 2025-2036



Get Involved!



2026 Climate Change Plan Update

The current Climate Change Plan is due to be updated by the end of next year for 2026-2036

WE ARE SEEKING COMMUNITY MEMBERS TO PARTICIPATE AND HELP GUIDE THE NEXT PHASE OF CLIMATE ACTION.

IF YOU'RE INTERESTED IN JOINING THIS EFFORT, PLEASE CONTACT THE CLIMATE DIVISION OR [CLICK HERE!](#)





Savannah Whaley

CLIMATE CHANGE MANAGER

SavannahW@lummi-nsn.gov



Shelbi Madera

CLIMATE RESILIENCY SPECIALIST

ShelbiM@lummi-nsn.gov